

GRAFTING SUPPLIES

PARAFILM M FILM

Originally made for use in laboratories to seal lab ware, Parafilm M has become a standard in the grafting industry. It provides waterproof, moisture proof protection for plant grafts. Can be stretched and folded around even sharp surfaces without rupturing. Comes in rolls, interlined with paper to prevent sticking – packaged in cardboard dispensing cartons.



- PM996 4" x 125'\$34.95 each
- PM992 2" x 250'\$34.95 each

TREEKOTE™ TREE WOUND DRESSING

Protects your shrubs, bushes, vines and trees from decay, insects and fungi. Apply to freshly pruned areas to shield tree wounds.

- Withstands all weather – hot, cold, wet and dry
- For patching damaged areas of trees and shrubs
- For use in tree surgery
- For propagating orchards
- For after grafting



- 00128 One Gallon Tub.....\$26.95 each
- 4+\$24.50 each
- 00212 12 Ounce Aerosol Can\$7.50 each
- 12+\$6.25 each
- 00032 1 pt. Brush-top Plastic Container\$6.50 each
- 1 qt. Brush-top Plastic Container\$9.50 each

CLARK'S TREE WRAP

Protects your trees against sunscald, severe frosts, rodents, wind burn and lawn trimmers.

- Preserves moisture content of bark
- Prevents excessive dripping



- 00304 4" x 150'\$11.50 each

TROWBRIDGE'S GRAFTING WAX

- Seals grafts and keeps stems from drying out
- Helps new grafts resist disease



- 00001 1 lb. Package\$8.50 each

GREEN VALLEY RUBBER BUDDING STRIPS

These budding strips save time and labor because of faster application and no preparation time. They are easily and quickly attached, provide even pressure over entire bound area and expand with growth. Because of greater protection, the buds knit faster and a better stand is assured. They automatically loosen in a few weeks because they are self releasing.



8" LONG, 3/8" WIDE, .020 GAUGE:

- 17408 1 lb. Package (515 strips) \$21.50 each
- 17408-4 4 oz. Package (128 strips) \$8.50 each
- 17408-8 8 oz. Package (257 strips) \$12.50 each
- 17408-5LB 5 lb. Package (2250 strips) \$99.50 each

6" LONG, 1/4" WIDE, .020 GAUGE:

- 1124 1 lb. Package (1,370 strips) \$19.95 each
- 1124-4 4 oz. Package (342 strips) \$7.50 each
- 1124-8 8 oz. Package (684 strips) \$11.50 each

5" LONG, 1/4" WIDE, .020 GAUGE:

- 1121 1 lb. Package (1,090 strips) \$19.95 each
- 1121-4 4 oz. Package (272 strips) \$7.50 each
- 1121-8 8 oz. Package (545 strips) \$11.50 each

TREEKOTE™ COMPLETE TREE GRAFTING KIT

This kit comes with everything needed for the beginner or the experienced grafter – excellent for hobbyist and for educational purposes. Each kit contains the following:

- 1/4 lb. package of Trowbridge Grafting Wax
- 1 quality Victorinox Grafting Knife
- 1 roll of Grafting Tape
- Complete & easy to follow instructions



- 00616 Treekote Kit..... \$31.95 each

4 Types of Grafting:



- Bud Grafting
- Cleft Grafting
- Whip Grafting
- Side Grafting

GRAFTING KNIVES

VICTORINOX HORTICULTURAL KNIVES

Acclaimed by users everywhere, Victorinox brand grafting and pruning knives are constructed with quality stainless steel blades and nylon handles with solid brass linings.

Model 19-010/39-010 Grafting Knife

- Lightweight knife for light pruning
- 2" blade
- 3-3/4" brass lined handle
- Weight: 2 oz.



19-010 Black	\$18.40 each
39-010 Red.....	\$16.95 each

Model 19-020/39-020 Budding Knife

- Rose budding knife with straight blade and bark lifter
- 2-1/4" blade
- 3-1/2" brass lined handle
- Weight: 2 oz.



19-020 Black	\$19.95 each
39-020 Red.....	\$17.95 each

Model 19-040/39-040 Pruning Knife

- Fruit tree budding knife with curved blade and bark lifter
- 1-3/4" blade, 1/2" serrated thumb support
- 4" brass lined handle
- Weight: 2 oz.



19-040 Black	\$21.95 each
39-040 Red.....	\$18.95 each

Model 19-050/39-050 All-Purpose Knife

- Small, yet strong
- 2-1/4" blade
- 3-1/2" brass lined handle
- Weight: 2 oz.



19-050 Black	\$16.95 each
39-050 Red.....	\$14.95 each

Model 19-110/39-110 All-Purpose Budding Knife

- 2" blade
- 1-1/4" solid brass bark lifter
- 3-1/2" brass lined handle
- 2-1/2 oz.



19-110 Black	\$34.95 each
39-110 Red.....	\$28.95 each

Model 19-300 Pruning Knife

- Heavy pruning knife, good for de-suckerin
- 3" curved blade
- 4-1/4" brass lined rosewood handle
- Weight: 3-1/4 oz.



19-300	\$42.95 each
--------------	--------------

* Full Line of Victorinox Horticultural Knives Available.

TINA GRAFTING KNIVES



Made in Germany, TINA horticultural knives are world renowned for excellence in workmanship. TINA

knives are the highest quality, precision knives available to the horticultural industry. Every TINA blade is hand forged and each handle is individually carved and shaped. It is well know that TINA cutlery needs less sharpening. A superior edge-holding quality saves valuable time and promises a perfect cut.

TINA Model T605

- Grafting and all-purpose knife
- 2-1/2" folding blade
- 4" polished walnut handle
- Weight: 2 oz.



T605 Right Handed.....	\$85.95 each
T605L Left Handed.....	\$87.80 each

TINA Model T608

- Standard grafting knife
- 2-1/4" folding blade
- 4" polished walnut handle
- Weight: 2 oz.



T608	\$83.95 each
------------	--------------

TINA Model T600-A12

- Extra heavy grafting knife
- 3" folding blade
- 4-1/2" specially shaped polished walnut handle
- Weight: 4 oz



T600-A12.....	\$109.95 each
---------------	---------------

TINA MODEL T640-10

- Combination budding and grafting knife
- Excellent for fruit stock budding
- 2-1/4" folding blade
- 4" polished walnut handle
- Weight: 1-1/4 oz.



T640-10 Right Handed.....	\$85.95 each
T640-10L Left Handed.....	\$87.80 each

*Full Line of TINA Grafting Knives Available

**NEED TO SPECIAL-ORDER
ARBORIST PRODUCTS?**

Call our friendly and knowledgeable sales consultants for answers to any questions you may have:

1-800-592-6940

GARDEN TOOLS

ULTRA PRO MOISTURE METER

- Controls soil wetness
- Keeps plants healthy
- Indoor or outdoor use
- No batteries needed

9628\$10.95 each



LONG-HANDLED BULB PLANTER

- Long handled bulb planter reduces bending and kneeling
- Rugged heavy duty construction
- Replaceable heat treated cutting ring and setscrew

9505\$19.95 each



CULTI-HOE

- Heavy duty steel construction with hardwood handle
- 18" long

9570\$10.95 each



HEAVY DUTY BULB PLANTER

- Heavy duty short handled bulb planter
- Replaceable heat treated cutting ring and setscrew

9506\$11.95 each



8 STEPS TO SMART GARDENING

HGTV experts offer sound advice to beginning gardeners:

1. START SMALL. The surest way to become frustrated with gardening is to bite off more than you can chew. Of course, small is a relative term; in an area of, say, only 100 square feet, you can plant a lot more than you might think. Small gardens are easy to manage, and by starting on a small scale you'll quickly learn gardening basics such as weed control, pest and disease control and watering.

2. START A COMPOST PILE. Whether you create a simple pile in an out-of-the-way corner of your property, or place a store-bought composter in a sunny spot in the yard doesn't matter. All that matters is that you make compost — and use it. Spread a thin layer over your garden beds at least once a year. Mix it with the native soil when planting. Apply it as a topdressing to lawns. Top off containers with it.

3. MAINTAIN HEALTHY SOIL. The use of compost goes hand in hand with maintaining healthy soil, but there are other things to consider: Try to avoid walking on the soil in established gardens, because every step compacts the soil. Create paths between rows or in beds. Avoid working the soil when it's wet. And finally, don't overwork the soil, especially with a rototiller.

4. MULCH. Mulch suppresses weed growth, maintains soil moisture, stabilizes soil temperatures and much more. So do yourself a favor: Mulch everything in sight with whatever organic mulch you like.

5. WATER PROPERLY. Don't water frequently for only brief periods of time. Instead, deep soak each time you water to encourage roots to grow deep down into the soil. Water early in the morning so plant leaves have a chance to dry during the day to help minimize diseases.

6. GO NATIVE. Native plants tend to be easier to grow, have fewer pest and disease problems and require less supplemental watering. There are hundreds of non-native plants that are well adapted to various areas of the country and are easy to grow. Many non-natives, however, are notorious for pest and disease problems or require special care.

7. MINIMIZE MAINTENANCE. Each suggestion so far will reduce the amount of time you have to spend in the garden. But there are two more we'd like to highlight: Cut back on fertilizers and prune only when necessary. Fertilizing and pruning causes plants to produce tender, succulent growth, which is what bugs prefer most.

8. VISIT THE GARDEN REGULARLY. If you'll spend just 10 minutes a day wandering around your lawn and garden — say, early in the morning with a cup of coffee or right after work — you'll form an invaluable bond with everything that grows. And along the way, you might stop and pull a few weeds, spot a plant in need of water, and so on. By dealing with those little things each day, you won't be so overwhelmed by the time the weekend rolls around.

EQUIPMENT & SUPPLIES



ARBORMASTER 16-STRAND 1/2" CLIMBING ROPE

A premium quality 16-strand line offering a smooth surface for "footlock" and exceptional durability. Made from specially treated polyester with a stabilized nylon core. BlueStreak is identified by alternating blue and white strands with a red and green internal ID marker. Features include:



- Maximum firmness for the "Footlock" climbing technique
- High visibility in trees
- Low stretch
- 1/2" diameter ensures an easier grip & minimizes fatigue
- Excellent knot-heat resistance
- Maintains excellent service flexibility

276-160-2P (Blue Streak).....	\$127.95 each
276-160-5P (Blue Streak).....	\$152.95 each
276-160-69 (Blue Streak).....	\$559.95 each
3480329 (Red, Black & White)	\$152.95 each

TRUE BLUE 12-STRAND 1/2" CLIMBING ROPE

True-Blue braided climbing line is a unique combination of extrusion set blue polyester fiber wrapped over a white polyester core in a Samson 12-strand "Dura-Tite" braid. This 100% polyester braid also has each of the twelve strands coated with Samthane™ finish that adds maximum wear life and consistent knot control. The outer blue polyester fibers also have Samson's "Parallay" parallel fiber orientation that minimizes fiber wear on rough surfaces and prolongs rope working life. True-Blue offers the highest level of performance in a high strength, low stretch climbing line with maximum wear resistance and a highly visible blue color. Features include:



- Maximum wear life
- Low-stretch & high strength
- Non-rotational
- Maintains excellent flexibility
- Stays firm and round in use

281-160-2P 120' Polybag.....	\$125.95 each
281-160-5P 150' Polybag	\$156.95 each
281-160-69 600' Reel	\$577.95 each

SAMSON ZING-IT!



Made from Dyneema® fiber, this twine yields the highest strength, lightest weight, lowest stretch and longest wear life available. The Samthane™ urethane coating adds to the twine's wear life, ensures the knot-holding capability of the twine, and gives the twine its distinctive yellow color.

8110171 1.75MM x 180'	\$26.95 each
-----------------------------	--------------

ARBOR-PLEX 12 STRAND CLIMBING ROPE AND 5/8" & 3/4" RIGGING LINE

Arbor-Plex combines polyester & polyolefin fibers in a Dura-Tite construction. The Dura-Tite braiding process tightens the braid to keep the rope round and firm for knot control and to allow the strands to be snag resistant. Tough polyester jacket fibers surround the polyolefin center fibers to maximize resistance to wear and fiber fusing while creating a lightweight high-strength rope. The outer polyester fibers utilize Samson's Parallay fiber orientations that prolongs rope life by minimizing the sawing actions of fibers over rough surfaces. Features include:



- Excellent wear and snag resistance
- Excellent knot holding ability
- Non-rotational, hangs straight
- Works well when wet
- Rot & mildew resistant

280-160-2P 1/2" x 120' Polybag	\$81.25 each
280-160-5P 1/2" x 150' Polybag	\$99.95 each
280-160-69 1/2" x 600' Reel	\$379.95 each
280-200-5P 5/8" x 150' Polybag	\$175.95 each
280-200-69 5/8" x 600' Reel	\$599.95 each
280-240-5P 3/4" x 150' Polybag	\$242.95 each

PRO-MASTER RIGGING ROPE

A firm and balanced three-strand rope offering reliability as well as economy. It holds its shape even under heavy use and the spun fiber on the surface offers excellent grip and knot holding. It is identified by a green surface tracer. For performance and price, there isn't a better three-strand rigging rope in the marketplace. Features include:



- Lightweight & easy to handle
- High strength & low stretch
- Excellent knot holding
- Can be stored wet or dry
- Excellent chemical resistance

176-200-5P 5/8" x 150' Polybag	\$92.95 each
176-240-5P 3/4" x 150' Polybag	\$122.95 each

COATED STABLE BRAID FOR RIGGING LINES

Stable braid is 100% polyester double braid construction that is high strength, low stretch, low snag and durable. Bright Samthane™ coating improves visibility and enhances resistance to abrasion and snagging. Features include:



- High strength-to-weight ratio
- Flexible & easy to handle
- Minimal UV degradation
- Torque-free

800-246-5P 3/4" x 150' Polybag (Orange)	\$269.95 each
806-03280 1/2" x 150' Polybag (Blue).....	\$169.95 each
806-040-40 5/8" x 150' Polybag (Red).....	\$214.95 each
800-285-60 7/8" x 150' Polybag (Green).....	\$347.95 each

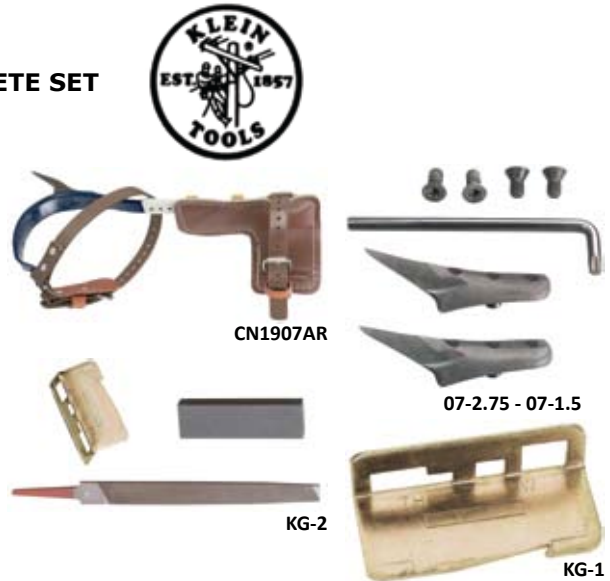
	TRUE BLUE	BLUESTREAK	ARBOR-PLEX	ARBOR-PLEX RIGGING	PRO-MASTER	STABLE BRAID
Size (diameter)	1/2"	1/2"	1/2"	5/8" 3/4"	5/8" 3/4"	1/2" 5/8" 3/4" 7/8"
Weight/100 lbs.	8.5	6.8	6.8	12.0 16.2	9.5 12.5	18.1
Avg. Tensile Strength	7,300	5,400	5,400	9,000 12,000	8,200 10,800	20,400
Working Load (lbs.)	730	540	540	900 1,200	820 1,080	2,040

TREE & POLE CLIMBERS

KLEIN TREE & POLE CLIMBERS

POLE CLIMBERS WITH 1-9/16" GAFFS – COMPLETE SET

- 8" x 8" (203 x 203 mm) cushioned, high-grade leather climber pads for maximum comfort.
- Neoprene-impregnated nylon climber straps for long-lasting life.
- Secure sleeve and leg iron connection. Two slotted hex-head bolts with lock washers and barrel-type nuts join the steel sleeve & leg iron together.
- Steel split ring secures ankle strap in place and allows for quick replacement.
- 4-7/16" (113 mm) wide stirrup provides greater foot support.
- Adjustable climber length – steel sleeve moves in 1/4" (6 mm) increments for the most comfortable fit.
- Contoured leg irons help position gaffs securely and comfortably.
- Replaceable gaff firmly attaches to the leg iron with a center pin and two TORX® screws.
- Gaffs are longer in length and wider in angle than 1-1/2" gaffs for exceptional resistance to cutouts.
- Sold in pairs only



CN1986AR	Pole Climbers with 1-9/16" Gaffs – Complete Set.....	\$299.95 pair
CN1907AR	Pole Climbers with 2-3/4" Gaffs – Complete Set	\$308.95 pair
15840	T-40 Torx Wrench for Tree Spikes	\$2.95 each
07-2.75	Replacement Tree Gaffs (2.75")	\$83.50 pair
07-1.5	Replacement Pole Gaffs (1.5")	\$71.95 pair
KG-1	Gaff Gauge	\$6.95 each
KG-2	Gaff Sharpening Kit.....	\$35.95 each

* KG-2 Gaff Sharpening Kit includes Gaff Gauge, Sharpening Stone and Flat File in Cordura Case

BUCKINGHAM TREE & POLE CLIMBERS

TREE CLIMBER SETS

Complete steel tree climber set includes:

- Contoured shank
- Straight stirrup or Offset Stirrup
- Dowel & screw replaceable gaff
- 2239 nylon leg straps
- 21391 nylon foot straps
- 3122 climber pads
- Includes standard length sleeves [9204] adjusting from 16-1/4" to 18-3/4"



93059	Straight Stirrup.....	\$274.95 each
95059	Offset Stirrup.....	\$279.95 each

REPLACEMENT GAFFS FOR BUCKINGHAM CLIMBERS

9306	2-1/2" (for 93059 and 95059)	\$64.95 pair
9206	1-1/2" (for 93059 and 95059)	\$63.95 pair

WEAVER REPLACEMENT STRAPS FOR TREE CLIMBERS

08-98001	Upper Climber Straps, Neoprene – 26"	\$19.95 pair
08-97001	Upper Climber Straps, Leather – 26".....	\$18.95 pair
08-97050	Split Ring Climber Straps, Leather – 26"	\$21.95 pair
08-98050	Split Ring Climber Straps, Neoprene – 26"	\$22.95 pair



08-98001



08-97001



08-97050



08-98050



WEAVER CLIMBING SADDLES

EXTRA WIDE BACK SADDLES

Extra wide 6" waist back is foam filled and lined with soft leather. Lighter weight forged aluminum Dees at front and back and three additional dees on the bottom of the waist back. Two nylon utility straps with a chrome bass 200 snap and a 2" nickel plated ring.

ONE FLOATING DEE, 2" NYLON LEG STRAPS



AVAILABLE SIZES:

- Small
- Medium
- Large
- X-Large

08-01040 \$148.95

ONE FLOATING DEE, PADDED 2" NYLON LEG STRAPS



AVAILABLE SIZES:

- Small
- Medium
- Large
- X-Large

08-01036 \$154.95

4-DEE, SEAT STRAP, 1" HEAVY DUTY COATED WEBBING LEG STRAPS



AVAILABLE SIZES:

- Small
- Medium
- Large
- X-Large

08-01035 \$139.50

4-DEE, SEAT STRAP, 2" NYLON LEG STRAPS



AVAILABLE SIZES:

- Small
- Medium
- Large
- X-Large

08-01033 \$164.45

MATERIAL STRENGTH

2" nylon webbing 3,000 lbs. test
 2" seat belt webbing 6,000 lbs. test
 2" forged buckle with roller..... 4,000 lbs. test
 2" forged dee with roller 5,000 lbs. test

SIZE CHART

Small.....30-38" waist
 Medium.....33-41" waist
 Large.....36-44" waist
 X-Large.....38-46" waist

4-DEE SINGLE THICK COTTON SADDLES

Cotton webbing reinforced with nylon provides comfort and strength. Floating Seat Strap can easily be positioned for maximum comfort. Leg straps are lockstitched and riveted to seat strap.

WITHOUT LEG STRAPS



AVAILABLE SIZES:

- Small
- Medium
- Large
- X-Large

08-01005 \$93.95

WITH 2" NYLON LEG STRAPS



AVAILABLE SIZES:

- Small
- Medium
- Large
- X-Large

08-01034 \$118.95

WITH HEAVY DUTY COATED WEBBING LEG STRAPS



AVAILABLE SIZES:

- Small
- Medium
- Large
- X-Large

08-01010 \$110.95

COUGAR ROPE BRIDGE EXTRA WIDE BACK SADDLE

4" wide leg pads and extra wide 7" back is constructed from memory foam that conforms to the legs and back, reduces pressure points, wicks away moisture and does not retain heat for cool, comfortable performance. This saddle has been tested to meet or exceed ANSI #A10.14 criteria.

WITH LEG STRAPS FEATURING MEMORY FOAM PADS



AVAILABLE SIZES:

- Small
- Medium
- Large
- X-Large

08-01075 \$276.75

PLEASE SPECIFY SIZE WHEN ORDERING.
 FULL LINE OF WEAVER SADDLES AVAILABLE.

EQUIPMENT & SUPPLIES



WEAVER THROW WEIGHTS

Aerodynamic design helps increase the range of the throw. The moving action of the #8 shot that fills

these Cordura® weights helps prevent the weights from hanging up in tree branches. The coated lead shot is contained in a latex pouch for environmental protection. A 4/8" nickel plated ring for attachment of a rope or poly pilot line is box-stitched to each weight.



- 08-98318-RD 12 oz, Red.....\$10.50 each
- 08-98319-BO 14 oz, Blaze Orange\$10.50 each
- 08-98320 16 oz, Red\$10.50 each

WEAVER BULLET THROW WEIGHT

Featuring a sleek, aerodynamic design, these throw weights feature contrasting colors that are easy to see. A 7/8" welded nickel plated ring for attachment of a rope or poly pilot line is box-stitched to each weight. The moving action of the #8 shot that fills these Cordura® weights helps prevent the weights from hanging up in tree branches. The coated lead shot is contained in a latex pouch for environmental protection. Bottom loop for an accessory carabiner offers easy attachment. Please specify color when ordering: Orange, Green, or Yellow



- 08-98323 10 oz.\$15.35 each

WEAVER THROW WEIGHT AND LINE KIT

Convenient, aerodynamic throw weight and lightweight polyethylene line kits help position ropes perfectly. Kits include throw weight, and a lightweight 15' 1/8" polyethylene line. Lightweight line is great for positioning heavier ropes.



- 08-98327 12 oz Kit.\$19.95 each

WEAVER BULL'S EYE™ THROW LINE

Polyethylene and Dyneema® combine to offer an extremely slick and strong design. Constructed from neon green polyethylene and white Dyneema® in a striped design that offers high visibility. Dyneema® core gives this throw line added strength. Rot-resistant line has good memory for recoiling. This 2.5mm rope glides easily in the hands. Average tensile strength of 450 lbs.



- 08-98026 2.5mm x 150'.....\$30.50 each

FLING-IT THROW LINE

Dyneema® throw line has a coating that enhances glide and resists abrasion. Constructed from 100% Dyneema® in a bright neon orange for maximum visibility. Features an 8-strand twill braid that provides resistance to abrasion and snagging. High tensile strength offers added durability. Average tensile strength of 650 lbs



- 08-98027 2.2mm x 150'.....\$47.45 each

BOLLARD FRICTION BRAKES

Used for take downs and risky overhead jobs where a ground man must lower heavy objects. Strong steel construction, the perfect portable friction post. Comes in two models, a plain type which only lets object down and a ratchet model which lifts up in addition to letting down. Shipped assembled, includes Bollard, 18' of 4" nylon webbing with and winch bar. Working load: 4,000 lbs. Tensile: 16,000 lbs.



- 140020 Plain Type Device \$319.95 each
- 140030 Ratchet Type Device \$535.95 each

PETZL ASCENSION HANDLED ASCENDERS

Used for self-belaying on fixed ropes, as a handle when you need to pull on a rope, as well as for



ascending ropes. Hand grip insulates hand in cold conditions, is large enough to take a bulky glove, and the safety catch can be operated with one gloved hand. The Ascension features a lug which helps prevent the rope from pulling the cam through the top of the ascender in the event of shock-loading. Lower carabiner attachment hole is rated to 200 kN (4496lbf). Actual ascender strength in the field is dependent on the rope used. Smaller diameter (less than 10mm) and/or dynamic ropes may fail as low as 950 lb. without damage to the ascender. Each ascender is factory proof test loaded to 1,100 lbs. UIAA approved and CE marked. Weight: 9 oz. Made in France.

- B17WLA Left-Hand \$74.95 each
- B17WRA Right-Hand \$74.95 each



FIGURE 8 DESCENDER RINGS

Loop on line anywhere there is slack and you've got an effective braking device for any application. The more tension applied the stronger the braking power. Made of lightweight aircraft alloy. 8,000 lbs min. tensile strength.



- K805303 5-3/4" Length – Aluminum 8..... \$12.75 each
- K852AL 6-3/4" Length – Rescue 8..... \$28.90 each

BIG "8" RESCUE DESCENDER

Stainless Steel—11,250 Tensile Strength



- USR-850-S 6-3/4" Length \$34.95 each



PETZL CLIMBING SUPPLIES

PETZEL VERTEX® VENT HELMETS –A10V

- Six-point mesh liner conforms to the shape of the head for improved comfort. Shock absorption achieved through deformation of the outer shell.
- CenterFit adjustment system ensures centering and optimal stability of the helmet on the head.
- Ventilation holes with sliding shutters allow the ventilation to be adjusted as needed from the outside.
- Side slots for mounting hearing protection
- Inserts for accepting a VIZIR face shield
- Slot for mounting a PIXA headlamp
- Four clips for mounting a headlamp with an elastic headband
- Chin strap designed to limit risk of losing helmet during a fall (strength greater than 50 daN)
- Size: 53-63 cm/20.9-24.8"
- Weight: 445 g/15.7 oz



A10VRA	Red.....	\$115.00 each
A10VWA	White	\$115.00 each
A10VYA	Yellow	\$115.00 each

PETZL SEQUOIA SRT HARNESS

Seat Harness for Arborists Using Ascent Techniques on Single Ropes

- Attachment bridge provides lateral mobility
- Attachment bridge is attached to the waistbelt and to the leg loops by two gated rings in order to:
 - distribute the pressure evenly between the waistbelt and leg loops (three positions)
 - adapt the length of the attachment bridge or install two attachment bridges
 - attach the RING S or the SWIVEL directly to the attachment bridge
- Extra-wide, semi-rigid waistbelt offers exceptional support and ventilation
- Waistbelt and suspension seat lined with breathable perforated foam for maximum comfort when suspended
- Ventral attachment point and the rear waistbelt buckle, used to attach the CROLL ventral rope clamp for ascending a single rope
- The two lateral attachment points transfer the weight evenly around the waistbelt for comfort when leaning back in the belt (when feet are supported)
- Five equipment loops with protective sheaths
- Two rings for attaching a hand saw
- Slots for CARITOOL tool holder
- Waistbelt equipped with self-locking DoubleBack buckles
- Leg loops equipped with FAST automatic buckles



C69AF01	Medium-Large, Size 1	\$425.00 each
C69AF02	Large-XLarge, Size 2	\$425.00 each

PETZL SEQUOIA HARNESS

Seat Harness for Arborists Using Traditional Footlock Ascent Techniques

- Extra-wide, semi-rigid waistbelt offers exceptional support and ventilation
- Waistbelt and suspension seat lined with breathable perforated foam for maximum comfort when suspended
- Easy to don with FAST buckles on the waistbelt and leg loops
- Attachment bridge provides lateral mobility
- Attachment bridge is attached to the waistbelt and to the leg loops by two gated rings in order to:
 - distribute the pressure evenly between the waistbelt and leg loops (three positions)
 - adapt the length of the attachment bridge
 - attach the RING S or the SWIVEL directly to the attachment bridge
- The two lateral attachment points transfer the weight evenly around the waistbelt for comfort when leaning back in the belt (when feet are supported)
- Five equipment loops with protective sheaths
- Two rings for attaching a hand saw
- Slots for CARITOOL tool holder



C690F0	Medium-Large, Size 1	\$395.00 each
C690F2	Large-XLarge, Size 2	\$395.00 each

PETZL NAVAHO® BOD

Work Positioning and Fall Arrest Harnesses

- Wide, semi-rigid waistbelt for excellent support
- Waistbelt and suspension seat lined with breathable perforated foam for maximum comfort when suspended
- Foam shoulder straps are widely spaced to reduce neck chafing and are linked to the directional ventral connector for easy donning
- If the waistbelt is weighted, the load is transferred to the shoulder straps, which distribute it over the shoulders
- The ventral attachment point distributes the weight more evenly between the waistbelt and the leg loops during suspended work
- The two lateral attachment points transfer the weight evenly around the waistbelt for comfort when leaning back in the belt (when feet are supported)
- A sternal and a dorsal attachment point for connecting a fall arrest system
- A rear attachment point on the waistbelt for connecting a restraint lanyard
- Three equipment loops with protective sheath
- Slots for CARITOOL tool holder
- Waistbelt and shoulder straps equipped with self-locking DoubleBack buckles



C710001B	Medium-Large, Size 1	\$375.00 each
C710002B	Large-XLarge, Size 2	\$375.00 each

STRAPS & LANYARDS



PETZL® MICROCENTER – CAM-LOADED ROPE CLAMP

For situations where size and weight are critical. The Microcenter is the logical choice of heavy duty hauling or self-protection on fixed ropes. For use on ropes from 9 to 13mm.

- Removable axle can be used to install or remove the clamp at any point on the rope
- Locking pin reduces the risk of undoing the system accidentally



B54..... \$61.95 each

PETZL® STOP - SELF-BRAKING DESCENDER FOR SINGLE ROPE

The STOP offers exceptional control and versatility, while the self-braking function facilitates on-rope maneuvers. Self-braking function allows you to easily stop and maintain your position on rope. Device can be rapidly installed or removed from the rope without disconnecting it from the harness. May also be used to ascend short.



D09.....\$125.95 each

PETZL® RACK – VARIABLE FRICTION DESCENDER WITH BRAKING BARS

Designed to cope with descents of widely varying length, the Rack may be used on single ropes (9 to 13mm). It has several removable bars which allow the speed of descent to be controlled when the weight of the load and of the rope vary, and also distribute the heat. It does not twist the rope.



D11..... \$94.95 each

BUCKINGHAM POSITIONING STRAP

Neoprene Impregnated Nylon with Tongue Buckle. Length-6'. 99E Locker.



386099E \$158.95 each

ADJUSTABLE STRAP

- 1-3/4" x 6' adjustable nylon web strap with double locking snaps on each end.



96506-ADJ..... \$36.95 each

ADJUSTABLE SAFETY LANYARDS

- Double Braid safety lanyard, 1/2" polyester rope
- Double locking snap hook on each end



050180 3-6' Adjustable Lanyard.....\$41.95 each
 050180-7 4-7' Adjustable Lanyard.....\$44.95 each
 050180-8 5-8' Adjustable Lanyard.....\$45.95 each
 050190 3-6' Adjustable Lanyard, Urethane Coated\$47.95 each

STEEL CORE FLIPLINE

These Fliplines consist of 16 strand neon orange polyester that is braided tightly over a flexible heavy-duty galvanized aircraft cable. Galvanized thimbles on each end with a locking swivel snap hook on one end. Easily adjustable using a flipline knot.



040306 6' Length \$48.95 each
 040308 8' Length \$51.95 each
 040310 10' Length \$54.95 each

NEED TO SPECIAL-ORDER ARBORIST PRODUCTS?

Call our friendly and knowledgeable sales consultants for answers to any questions you may have:

1-800-592-6940





CARABINERS

PETZL VULCAN CARABINER

High-Strength Steel Carabiner

- Steel adapted to difficult use conditions
- For use with heavy loads
- Large size allows easier connection of multiple elements
- Wide opening for connection to thick anchors
- Keylock system helps prevent snagging of the carabiner during maneuvers
- Red indicator provides a visual warning when the carabiner is unlocked (on SCREW-LOCK version)



M73SL Screw-Lock \$29.95 each
 M73TLA Triact-Lock \$39.95 each

PETZL OXAN CARABINER

Oval Steel Carabiner

- Steel adapted to difficult use conditions
- Keylock system helps prevent snagging of the carabiner during maneuvers
- Red indicator provides a visual warning when the carabiner is unlocked (on SCREW-LOCK version)



M72SL Screw-Lock \$15.95 each
 M72TLA Triact-Lock \$24.95 each

PETZL WILLIAM CARABINER

Large Capacity Aluminum Carabiner

- Large size and opening to allow easy anchoring of several ropes and slings
- Wide pear shape facilitates belaying with a Munter hitch
- Keylock system helps prevent snagging of the carabiner during maneuvers
- Red indicator provides a visual warning when the carabiner is unlocked (on SCREW-LOCK version)



M36SL Screw-Lock \$14.95 each
 M36TL Triact-Lock \$18.95 each

PETZL AM'D CARABINERS

Asymmetrical Aluminum Carabiner

- Specifically adapted for connection of equipment and use at the end of a lanyard
- Excellent strength-to-weight ratio
- Keylock system helps prevent snagging of the carabiner during maneuvers
- Red indicator provides a visual warning when the carabiner is unlocked (on SCREW-LOCK version)



M34SL Screw-Lock \$12.95 each
 M34TL Triact-Lock \$17.95 each

CARABINERS AND HARDWARE

Type	Locking Snap	Rebar Hook	Ladder Hook Snap	Non-Locking
Material	Forged Steel	Forged Steel	Aluminum	
Length	5 1/2"	8 1/2"	9 1/2"	5 3/16"
Throat Opening	.766mm	2.15mm	2.45mm	5/8"
Test	5,150	5,150	5,600	5,000
Weight	10.6 oz	1.48 lb	1.6 lb	9 oz
Part Number	96595	USR-BRH-C	USR-LDR-A	990
Price	\$12.95	\$19.95	\$22.95	\$4.75



KONG CARABINERS

Gate Type	Screw-Lock	Screw-Gate	Autoblock Rombo	Screw-Gate	Autoblock Rombo	Twist-Rombo	Screw-Lock
Material	Carbon Steel	Carbon Steel	Carbon Steel	Aluminum	Aluminum	Aluminum	Carbon Steel
Length	107mm	103mm	113.6mm	116mm	113mm	116mm	113.6mm
Throat/Gate Opening	16mm	17mm	27mm	25mm	27mm	23mm	26.5mm
Test	5,400 lbs	4,950 lbs	11,240 lbs	4,950 lbs	6,750 lbs	4,950 lbs	11,240 lbs
Weight	5 oz	5 oz	9 oz	3 oz	3.2 oz	4 oz	9 oz
Part Number	KNG-462-CSL	KNG-463	KNG-411-C3TR	KNG-266	KNG-911-A3TR	KNG-786-ATR	KNG-411-CSL
Price	\$12.95	\$8.95	\$22.95	\$17.95	\$23.50	\$20.75	\$18.95



PULLEYS

CMI HEAVY-DUTY PULLEYS

- RP105 – Stainless Steel Sideplates, 3" Aluminum Sheave, Bushing, Stainless Steel Axle
- RP123 – Stainless Steel Sideplates, 4" Aluminum Sheave, Bearing, Stainless Steel Axle
- RP124 – Stainless Steel Sideplates, (2) 4" Aluminum Sheaves, Bushing, Stainless Steel Axle



Part #	MBS	Rope Capacity	Size	Weight	Efficiency	Price
RP105	16,000 lbs	5/8"	6.5" x 4"	2.2 lbs	92.1%	\$59.95
RP123	20,000 lbs	5/8"	8" x 4.75"	2.2 lbs	94.6%	\$71.95
RP124	25,000 lbs	5/8"	9" x 4.75"	3.95 lbs	198%	\$129.95



CMI SERVICE LINE PULLEYS

- RP115 – Black Anodized Aluminum Sideplates, 2" Steel Sheave, Bushing, Steel Axle
- RP116 – Blue Anodized Aluminum Sideplates, 2" Aluminum Sheave, Bearing, Steel Axle

Part #	MBS	Rope Capacity	Size	Weight	Efficiency	Price
RP115	7,500 lbs	1/2"	5" x 2.5"	.65 lbs	89.2%	\$28.95
RP116	7,500 lbs	1/2"	5" x 2.5"	.40 lbs	90.6%	\$31.95



CMI DOUBLE ENDED PULLEY

- RP111 – Stainless Steel Sideplates, 2-3/8" Aluminum Sheave, Bushing, Stainless Steel Axle

Part #	MBS	Rope Capacity	Size	Weight	Efficiency	Price
RP111	8,500 lbs	5/8"	5.75" x 3"	.70 lbs	91.4%	42.95



CMI ARBORIST PULLEYS -- Aluminum sheave, Bushing

Part Number	MBS	Sideplates	Rope Capacity	Size	Weight	Axle	Price
RP130	28,000 lbs	Stainless Steel	5/8"	6.5" x 4"	2.3 lb	Stainless Steel	\$104.95
RP131	40,000 lbs	Stainless Steel	3/4"	7" x 5"	5.6 lb	Zinc Plated	\$167.50
RP145	25,000 lbs	Zinc-Plated Steel	3/4"	6.5" x 4"	3.65 lb	Stainless Steel	\$84.95
RP146	68,000 lbs	Stainless Steel	1"	9.25" x 6"	6.6 lbs	Blue Anodized Aluminum	\$249.95



RP130



RP131



RP145



RP146

SPEED LINE PULLEYS

- Versatile pulley to assist when working to cut limbs around destructible objects
- Can be put on your line anywhere for an instant speed line or for leverage assistance



- 2" Aluminum sheave with bushing
 - 1/2" rope capacity
 - 5,500 lbs. tensile
 - Alloy sides
- KCA395..... \$34.95 each



- Micro Pulley, 1" Aluminum with Bushing KN 30, Rope Capacity 12mm
- K993..... \$12.95 each



- 4" Stainless steel sheave w/bushing
 - 5/8" rope capacity
 - 16,000 lb. tensile
- KCA485..... \$60.75 each

PETZL FIXE PULLEY

Versatile Compact Pulley

- Fixed side plates allow quick installation and coupling with a rope clamp
- Designed for hauling systems and deviations
- Sheave mounted on self-lubricating bushings for efficiency
- For use with OK or WILLIAM type carabiner



- P05W \$25.95 each



PRUNING SAWS

BAHCO 7-1/2" FOLDING SAW

- Foldable pruning saw with JS tothing designed for fruit growing, wine growing and landscaping
- Blade with hardpoint teeth and extra wide gullet for faster cutting in thicker green branches
- Strong 2-component plastic handle with comfortable grip
- Safety lock both in opened and closed position
- Replacement blade available



396-JS..... \$28.95 each

BAHCO TRADITIONAL PRUNING SAW

- Pruning saw for dry or hard wood
- Curved blade with fully ground, set teeth
- Comfortable and strong beech wood handle with a long hook
- Hardpoint teeth
- Replacement blades available



4211-14-6T 14" Blade..... \$26.95 each

BAHCO 21" SANDVIK BOW SAW

- A small and handy bow saw for sawing wood and wood-like materials
- The pointed nose makes the saw well suited for use in tight spaces, and it is ideal for pruning
- Complete with a type 51 blade for cutting dry wood
- The blade is hardened for exceptional durability and long service.



331 21" Blade..... \$14.95 each
 3+..... \$13.95 each

BAHCO LAPLANDER 9" FOLDING SAW

Bahco Laplander folding pruning saw is a favorite tool of many professional gardeners. Lightweight and comfortable in your hand, it features a folding blade with a special non-stick coating that helps it glide through branches and even small logs with surprising ease. Bahco's special XT tothing allows the saw to cut in both directions meaning that you are cutting on both the "push" and "pull" cutting movements.



Only 9" long when folded and weighing just 6 oz, the saw is small and light. The high-quality Sandvik steel blade locks in place when open and folds away safely when you're not using it.

396-LAP..... \$28.95 each

GREEN MOUNTAIN HIGH LIMB CHAINSAW

The High Limb Chain Saw is constructed of patented chain blade which features BIMATIC carbon steel cutters. These cutters are engineered for hand use and maximum cutting efficiency as the blade is drawn back and forth. Lightweight, but extremely strong, polypropylene ropes are attached to each end of the blade. A sandbag throwing weight is attached to one rope end. The polypropylene ropes are electrically non conductive, and will pose no problem if the saw comes in contact with overhead wiring.



Each saw contains the patented Bimatic blade for two-way cutting action, two 25 foot control ropes, throwing weight, complete instruction booklet, and handy vinyl carrying pouch.

10033 24" Chain Blade..... \$27.95 each
 10034 48" Chain Blade..... \$39.95 each

NEED TO SPECIAL-ORDER ARBORIST PRODUCTS?



Call our friendly and knowledgeable sales consultants for answers to any questions you may have:

1-800-592-6940

PRUNING SAWS



NICHOLSON NO. 420 TUTTLE TOOTH PRUNER

- All-purpose saw for pruning with special steel constructed blade
- Teeth designed for fast cutting of large limbs and firewood
- Wood handle
- Full cardboard sleeve protects blade
- 24" Overall Length



80309	\$37.95 each
6+	\$35.95 each

NICHOLSON NO. 14 SILVER FLASH PRUNER

- Heavy-duty
- Preferred by utility crews and tree surgeons
- Silver Steel[®] constructed blade, flat ground
- Concave cutting edge has precision set and bevel filed teeth
- Extra large teeth and gullets for speed cutting large limbs
- Wood handle
- Full cardboard sleeve protects blade
- 26" Overall Length



80299	1-5	\$57.95 each
	6+	\$54.95 each
08-02001	Leather Sheath w/ Snap Hook	\$37.95 each
08-03001	Rubberized Belting Sheath w/ Snap Hook	\$28.95 each

FANNO RIGID HANDLE PRUNING SAWS



These saws are curved, pull cutting tree saws



designed for close work. The curved blade plus the self-feeding and self-cleaning tooth design make these tree saws exceptionally efficient tools for cutting in any position.

FA22	21" cutting edge, 5 points per inch lance teeth	\$38.50
FA24	22.5" cutting edge, 4 1/2 points per inch lance teeth	\$39.50

FANNO 13" CURVED PRUNING SAW

- 13" cutting edge with Tri-Edge teeth
- 6 teeth per inch
- Contoured laminated hardwood handle



FI-1311	\$24.50 each
6+	\$22.75 each



GILMOUR 570 CURVED SAW

- 16" curved lacquered steel blade
- Sharp, deep set teeth
- Durable hardwood handle



570	\$18.95 each
-----	-------	--------------

GILMOUR 514S CURVED SAW

- Cuts on pull stroke
- 8 points per inch
- Sharp deep-set teeth
- Durable hardwood handle



514S	\$19.95 each	
08-02009	Leather Scabbard with Snap Hook	\$25.95 each

FELCO PRUNING SAWS



- Rust resistant chromed blade made of steel
- Impulse heat treatment of the teeth / clean, precise cut / parts can be replaced
- Conical blade shape for an easy, non-clogging cut
- Set and shape of teeth prevents sap build-up / maintenance free
- Comfortable non-slip handle
- Sheath for right- or left-handers with detachable belt loop

FELCO 611 PRUNING SAW



F-611	13" Blade	\$59.95 each
611-3	Replacement Blade	\$45.95 each

FELCO 621 PRUNING SAW



F-621	9.5" Blade	\$57.95 each
621-3	Replacement Blade	\$43.95 each

FELCO 600 PRUNING SAW



F-600	6.3" Blade	\$30.50 each
600-3	Replacement Blade	\$24.50 each

TINA BANTAM BOW SAW



Originally designed in 1922, this popular bow saw has no equal in choice of material used or quality of old-world craftsmanship.

Blade cuts on pull or push stroke. One free replacement blade with every new bow saw.

- Length - 19"
- Weight - 16 oz.
- Beechwood Handle
- Made in Germany



T-900	14" Blade	\$75.95 each
T-900-3	Replacement Blade	\$10.75 each

CHAIN MATE SURVIVAL SAW

With carbon steel teeth, this survival saw will cut wood up to 6 inches in diameter, and can be adapted with any rope that's handy to gather firewood from high up places. It's so compact it fits in almost any place (shirt pockets, etc) and weighs under 6 oz. 24" chain with strap handles.



CH-24	\$17.95 each
-------	-------	--------------

GILMOUR TREE PRUNERS & POLE SAWS **Gilmour**

MODEL 11-18 COMMERCIAL TREE PRUNER

- 1" diameter cutting capacity
- Chain-operated pruner head
- Malleable iron casting with center cut action
- Three 6' by 1-1/4" diameter fiberglass poles
- Operating rope included



11-18.....\$110.95 each

MODEL 20-18 PROFESSIONAL POLE SAW

- Durable cast aluminum saw head (Model No. 20)
- 16" curved saw blade with nonstick coating
- Three 6' by 1-1/4" diameter fiberglass poles
- Hook for pulling down cut branches
- Paint brush holder



20-18.....\$93.25 each

MODEL 11 PROFESSIONAL PRUNER HEAD

- Chain-Operated Pruner Head
- 1" diameter cutting capacity
- Malleable iron casting with center cut action
- For use with 1-1/4" diameter poles (Model No. 202 and 203)



11A\$34.25 each

MODEL 20 PROFESSIONAL PRUNER HEAD

- Cast Aluminum Saw Head
- 16" curved saw blade with nonstick coating
- Hook for pulling down cut branches
- Paint brush holder
- For use with 1-1/4" diameter poles (Model Nos. 102 and 103)



20A Model 20 Pruner Head\$23.75 each
 20B Replacement 16" Saw Blade for 20A.....\$12.50 each

MODEL 2011 PROFESSIONAL PRUNER HEAD AND SAW

- Combination pruner and saw
- 1" diameter cutting capacity
- Consists of No. 11 head and No. 2011B saw blade with nonstick coating
- For use with 1-1/4" diameter poles (Model Nos. 102 and 103)



2011 Pruner Head and Saw\$43.50 each
 20B Replacement 16" Saw Blade for 2011\$12.75 each

MODEL 102 HEAD EXTENSION POLE

- 5-3/4' fiberglass head section pole
- 1-1/4" diameter
- For use with Model Nos. 11, 20, or 2011 heads
- Includes snap connectors for extension poles



102.....\$21.25 each

MODEL 103 EXTENSION POLE

- 6' fiberglass head section pole
- 1-1/4" diameter
- For use with Model Nos. 102,103, or 3FG
- Includes snap connectors-both ends for head poles and other extension poles



103.....\$14.75 each

MODEL 3FG POLE ADAPTER

- 5-3/8" Pole Adapter to mount head pole to
- For use with Model Nos. 11, 20, or 2011 heads
- Connects to model nos. 103 or 106FG poles



3FG.....\$2.95 each

312TCS TREE PRUNER

- Gear driven action and dual pulley system triples cutting power
- Fiberglass poles telescope from 6' to 12'
- 1-1/4" diameter cutting capacity
- Heavy-duty solid steel head with hardened and tempered steel lopper blade
- 16" curved saw blade
- Poles securely lock with convenient thumb screw
- 13'6" solid braid polyester cord



312T Complete Set.....\$64.95 each
 312HEAD Replacement Head\$12.75 each

HEAVY DUTY BLUE POLYPROPYLENE TARPS



070618	8'x10'\$5.95 each
TARP1012	10'x12'\$6.95 each
070627	12'x14'\$9.95 each
070640	20'x30'\$39.95 each
070642	20'x40'\$42.95 each
070650	40'x40'\$69.95 each
070652	40'x60'\$99.95 each

FELCO HAND PRUNERS

FELCO 2

FELCO design has remained unchanged for over forty years. Solid forged metal alloy handles are complimented by a Swiss precision made hardened cutting blade (replaceable) and an anvil blade with a sap groove. A hardened bolt and nut assure exact adjustment of both the cutting and anvil blades. A rubber cushion and shock absorber provide smooth working and soft closing of this pruner. Length 8-1/2". Weight 8.5 oz.



F-2A 1-5.....\$53.75 each
6+.....\$50.25 each

FELCO 7

Here is a superbly designed pruning shear for the professional. The rotating handle revolved on its axes, allowing the fingers to move naturally, thereby reducing the blisters and hand fatigue that so often accompany prolonged pruning work. This unique swivel action requires up to thirty percent less effort than conventional models and offers maximum comfort on continuous-use jobs. Both the cutting and anvil blades are not riveted, and the narrow, pointed blade design allow for close pruning. Length 8-1/4". Weight 10.2 oz.



F-7A\$74.75 each

FELCO 4

If you want a more basic pruner without the refinements but still with the famous FELCO quality and cutting performance, the FELCO 4 is for you. This model offers the same quality cutting blade as the FELCO 2. The blade adjustment is by the center nut and bolt only. It has no rubber cushion, shock absorber or locking segment and is priced accordingly. Length 8-1/4". Weight 7.8 oz.



F-4A\$45.95 each

FELCO 8

If you are undecided about the FELCO 7, we recommend this ergonomically designed pruner. It is identical to the FELCO 7, except for the rotating handle. Light alloy handles are shaped to act as an extension of the forearm. The anvil blade handle is designed to prevent the pruner from sliding through the hand. Hollow-ground, the Swiss precision, hardened steel blade features a wire cutting notch. The blades are set on dowel pins for easy maintenance. Length 8-1/4". Weight 8.7 oz.



F-8A\$57.95 each

FELCO 5

This is the lowest priced FELCO pruner, still with excellent cutting ability. With handles made from solid steel and simplified construction, it is an ideal choice for the home hobby gardener. No cushion stop, sap groove or wire cutting notch. Length 9". Weight 11 oz.



F-5A\$31.95 each

FELCO 11

Suitable for every type of pruning. Ergonomic hand-fitting design. Superbly balanced, the FELCO 11 offers a large cutting capacity. Narrow pointed anvil blade allows easy access to twiggy branches and assures a close cut to the trunk. Precision alignment of cutting and anvil blade due to adjustable locking segment. Easy blade replacement. Shock absorbers reduce fatigue of wrist.



F-11A\$57.95 each

FELCO 6

Designed for those with smaller hands who may prefer a smaller, lighter pruner. It is comfortable to use yet every bit as sturdy and powerful as all the other FELCO models. Ideal for small pruning work such as grape vines, shrubs and young trees, it is also the choice of many florists. The cutting and anvil blades are not riveted. The shorter blades facilitate closer cutting to the stem of the plant. Length 7-1/4". Weight 7.5 oz.



F-6A\$53.75 each

FELCO 12

Requested by many users of the popular FELCO 6 model, this pruner has the added feature of a revolving cutting blade handle which helps prevent or reduce blisters and muscle fatigue that results from prolonged pruning. Smaller cutting head for precision pruning closer to the trunk. Length 8-1/4". Weight 8.5 oz.



F-12A\$71.25 each

FELCO 9

Left Handed. This is a true left-hander's version of the FELCO 8 with all the same features. Light alloy handles are shaped to act as an extension of the forearm. The anvil blade handle is designed to prevent the pruner from sliding through the hand. Hollow-ground, the Swiss precision, hardened steel blade features a wire cutting notch. The blades are set on dowel pins for easy maintenance. Length 8-1/4". Weight 8.7 oz.



F-9A\$57.95 each

FELCO HAND PRUNERS

FELCO 13

Multi-purpose patented pruning shear. Held as single-handed pruning shear but extra long cutting blade handle allows the use of both hands when cutting extra thick branches. The FELCO 13 is a good choice for users wishing to avoid tendonitis from prolonged and heavy pruning.



F-13A \$70.95 each

FELCO 31

The Felco 31 is an anvil pruner which is beveled on both sides of the blade for easy clean-cut pruning. The adjustable brass anvil blade is coated in non-stick Xylan for easy cleaning and can be repositioned to line up with the cutting blade. Handles are forged from robust aluminum alloy and are ergonomically shaped. Weight 8 oz.



F-31A \$49.25 each

REPLACEMENT PARTS FOR FELCO PRUNERS

CUTTING BLADES

Part Number	Fits Models	Price
2-3	2, 4, 11	\$16.25
5-3	5	\$15.25
6-3	6, 12	\$15.25
7-3	7, 8	\$16.25
9-3	9, 10	\$16.25
13-3	13	\$17.95



SPRING PAKS (2 PER PAK)

Part Number	Fits Models	Price
2-91	2, 4, 7, 8, 9, 10, 11	\$5.00
5-91	5, 13	\$5.00
6-91	6, 12	\$5.00



FELCO ACCESSORIES

F-912

Exclusive holster design fits all FELCO pruners. Can be used on belt or pocket with clip.

912 \$12.25 each



F-919

FELCO's most popular holster. Fits all pruning shear makes. Designed to fit on belt only. Extra riveting for long lasting use.

919 \$9.95 each



FELCO LUBRICANT SPRAY

F-980 \$38.95 each



OTHER HAND PRUNERS

SNAP-CUT TRADITIONAL ANVIL PRUNER

- 3/4" diameter cutting capacity
- Heavy-duty steel body with cushioned grips
- Replaceable brass anvil
- Hardened and tempered, precision ground steel blade with Teflon-S coating
- 8" Overall Length

19T \$13.00 each



CSP WISH LIST:

LOPPING SHEARS



FELCO LOPPERS

Simply the best loppers in the world. Two-hand pruning shears are made with solid, forged light metal handles, cushion stops, sap groove on anvil blade and the famous FELCO fine blade adjustment. Rubber bumper and grooved rubber handgrips. Because of its construction and great cutting performance FELCO loppers have achieved top results when compared with other similar loppers on the market. FELCO loppers cut to 1-1/2" (38mm) branches with ease.



F-20A	17" Length.....	\$85.75 each
	3+	\$83.25 each
F-23A	25" Length.....	\$101.25 each
	4+ Length	\$94.25 each
F-22A	33" Length.....	\$195.95 each
F-21A	21" Length.....	\$96.95 each



BAHCO PROFESSIONAL BYPASS LOPPERS

MODEL P14

Bypass Lopper for pruning and training of vines, orchards and shrubs. Small cutting head for easy access to hidden branches. Very comfortable to use and prevents fatigue through soft rubber bumpers between handles. Total Length 24", Cutting Capacity 1-1/4".

P14-60.....	\$49.50 each
6+	\$47.50 each



MODEL P19

Heavy duty bypass lopper for cutting of very thick and strong branches on old and mature trees and vines (trunks). Long reach, also for overhead cutting. Aluminum tube handles for easy handling. Cutting head with double radii blade for powerful cuts and smooth finish. Very comfortable to use through soft rubber buffers between the handles. Total Length 32", Cutting Capacity 1-3/4".

P19-80.....	\$108.95 each
-------------	---------------



BOND MFG. US600LS LOPPERS

- Curved forged steel blade
- Hook styling
- A particular favorite of fruit growers
- Tubular steel handles with textured grips
- 3 Year Mfr Guarantee

10005.....	\$39.95 each
------------	--------------



GILMOUR SNAP-CUT LOPPING SHEARS

MODEL 155 BYPASS LOPPER

1-1/4" diameter cutting capacity. Hardened steel blades with rustproof coating. Sap groove prevents sticky build up on blade. Heavy-duty wood handles with cushion grips. Shock absorbing bumpers. 27" Overall Length.

155.....	\$27.95 each
5+.....	\$25.95 each



MODEL 55T ANVIL LOPPER

1-3/4" diameter cutting capacity. Gear driven action for triple cutting power. Hardened steel blade with replaceable brass anvil. Heavy-duty ash handles. 30" Overall Length.

55T.....	\$46.95 each
3+.....	\$42.95 each



TRAILBLAZER LOPPERS

Built with strong, but light in weight, anodized extendable aluminum handles. The tools use a pin lock system to control the extending feature of the handles which ensures a safe lock and smooth action. Comfortable Santoprene grips provide a good grip even in wet conditions. All blades are Teflon coated high carbon steel which ensures edge retention and helps eliminate binding while cutting wet wood. These tools are great for the home owner, and will take the abuse of the most demanding contractor.



TELESCOPIC JUMBO RATCHET ANVIL LOPPERS

There is nothing else like this lopper on the market. Able to cut up to a 3" diameter limb with ease due to the patented ratcheting mechanism. This lopper eliminates a saw in a lot of cases. Comes complete with extendable handles to help you cut those out of reach limbs. Weight 4.4 lbs.



TBL-24JRA	\$44.95 each
-----------------	--------------

TELESCOPIC RATCHET BYPASS LOPPER

Cutting healthy limbs that are full of moisture is made easy with this lopper. Leaves a clean cut that promotes future healthy growth. This unit is also equipped with 3" leverage system for maximum power as well as a pin locking extendable handles. 2" Capacity. Weight 3.7 lbs.



TBL-24BR.....	\$38.95 each
---------------	--------------

FRED MARVIN POLE PRUNERS & SAWS



PRUNER HEADS

Marvin's 1-1/4" cut pruner head with round casting. Fits all Marvin fiberglass "head" poles and 1-1/4" octagonal wood poles.



PH4R Pruner Head Only \$59.95 each

Marvin's PH4 1-1/4" cut pruner head with "quick change" adapter. Fits all Marvin poles with a female ferrule (mid-poles and base poles).



QCP PH4 Pruner Head w/Aluminum Adapter \$65.95 each

Marvin's Universal Saw Head. Fits all Marvin saw head poles and 1-1/4" octagonal wood poles. An assortment of saw blades attach to head via a wing nut and bolt.



U1R Quick Change Saw Head \$14.50 each

Snap-Cut 16" Curved Saw Blade



20B \$12.95 each

**Other blades available*

TRI-EDGE HAND SAW

Fred Marvin's most popular hand saw. Marvin F-350 tri-edge hand saw with a 13" blade and a rubber handle.



HS11 \$20.75 each

TURBOCUT HAND SAW

Marvin / ARS tri-edge hand saw with a 12" blade and marine plywood handle.



HS9 \$30.50 each

FIBERGLASS POLES

10' yellow fiberglass pole. Used for PH4R pruner head (Left)



Z10FS \$26.50 each

12' telescopic fiberglass pole with dual locking collar and rope anchor.



Z12T \$54.50 each

6' Fiberglass base pole (female coupling & rubber base)



Z6FB \$28.95 each

6' Fiberglass pruner head pole (male coupling & rope anchor)



Z6FH \$29.95 each

6' Fiberglass mid pole (male & female coupling)



Z6FM \$32.95 each

8' Fiberglass mid pole (male & female coupling)



Z8FM \$38.00 each

POPLAR WOOD POLE

1-1/4" octagonal cut. Each 2' poplar octagonal pole is handcrafted to assure its utmost strength and durability.



12P \$23.95 each

POLYPROPYLENE ROPE

1,000' Spool of pruner rope. Polyester, 5/16"



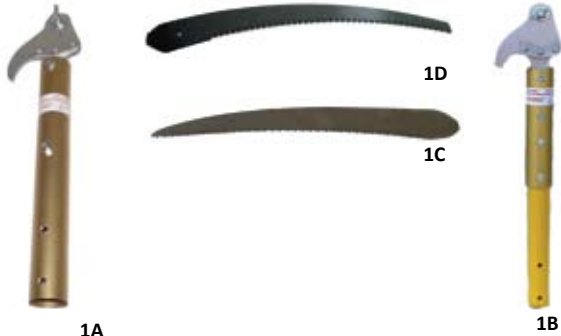
Z125P \$129.95 each

AAZEL CORPORATION

SERIES 1 SAW

The 1A or 1B features interlocking teeth, giving the operator 13 true locking angles for the saw blade. The 1A is designed to work with the Aluminum Sectional or Telescopic poles while the 1B is used with the sectional or telescopic Fiberglass Poles. Each piece sold separately.

- 1A Aluminum Saw Handle\$40.95 each
- 1B Fiberglass Saw Handle \$40.95 each
- 1D 18" Saw Blade\$22.25 each
- 1C 20" Saw Blade\$35.75 each



SERIES 100 ALUMINUM POLES

The Series 100 Aluminum poles are stronger, more durable, and have less pole deflection. One end of the pole is expanded to accommodate the end of the mating pole and is held together with 2-1/4 bolts and nuts. All poles are 1-1/2 inch diameter and Gold Anodized.

- 100-6 6'\$39.50 each
- 100-8 8'\$47.95 each

SERIES 300 FIBERGLASS POLES

Series 300 Sectional Fiberglass Poles are 1-1/4" diameter yellow UV coated cover hollow poles with a 1-3/8" diameter combination end connection. Either bolt together with 2-1/4 bolts and nuts or rotate the pole 90 degrees and have the quick connect lever. The quick connect lever is interchangeable with most other popular brand poles.

- 300-6 6'\$26.50 each
- 300-8 8'\$30.50 each

SERIES 200 ALUMINUM TELESCOPIC POLES

Series 200 Aluminum Telescopic Poles are ideal for long reaches, up to 60 feet. Each pole is gold anodized for protection. Aluminum poles are more durable, lighter weight, and have less pole deflection. The base pole is 1-1/2" diameter and each additional section is 1/8" smaller in outside diameter

- 200-12 (2) 6' Poles – 12' Extended \$95.50 each
- 200-18 (3) 6' Poles – 18' Extended \$158.95 each
- 200-24 (4) 6' Poles – 24' Extended \$210.95 each
- 200-30 (5) 6' Poles – 30' Extended \$266.50 each

SERIES 400 FIBERGLASS TELESCOPIC POLE

The Series 400 Fiberglass Telescopic pole is ideal when electrical hazards exist while requiring a longer reach. The base pole is 1-1/4" and the top pole is 1" in diameter with a 1-3/8" diameter sleeve to mate with all the saw heads or pruners.

- 400-12 (2) 6' Poles – 12' Extended\$67.50 each
- 400-14 (2) 7' Poles – 14' Extended\$75.95 each
- 400-16 (2) 8' Poles – 16' Extended\$91.95 each

POLE SAW PACKAGE

- The series 1-1250 Pole Saw package includes:
- (2) 6 foot fiberglass sectional poles (Series 300)
 - Adjustable saw head (Series 1)
 - 17" length of cut saw blade (No. 1D).

- 1-1250-1D6F \$60.95 each

NO. 7 PRUNER HEAD, BLOCK AND TACKLE STYLE

The No. 7 Pruner Head is a downward cutting anvil style cutter which can cut up to a 1-1/4" diameter branch with a single pull on the rope. The 3 pulley system generates over 250 lbs of cutting force at the blade with as little as 20 lbs pull on the rope. The downward action never binds with the branch. The blade is made of high strength steel allowing it to maintain its cutting edge longer. It comes with 12 foot of nylon rope.

- 7A Pruner Head\$141.95 each
- 750A Replacement Cutting Blade.....\$15.95 each

SAND RAKE

Designed to clean beaches, sand lots, play grounds and dog runs for small debris by pulling it behind and penetrating about 1 inch deep into the sand or pea gravel. It empties from either end or the top. Comes with a 3 piece 6' long aluminum handle which is ideal for storage. The wire mesh is 1/4 square opening.

- 120-1625 24'\$82.95 each
- 120-2425 16'\$71.95 each



SILKY TREE PRUNING SAWS

SILKY HAYAUCHI POLE SAW

The Silky 179-39 Telescoping Landscaping Pole Saw HAYAUCHI 390 (21 feet) is a bestselling, professional, aluminum telescoping pole saw - the pole saw of choice by professionals. The aluminum alloy extension poles are oval shaped, providing precise control over the direction of the blade (especially important for high cutting) and giving strength and rigidity to the pole thus reducing bending to the minimum. The base pole has a pole-end shock absorber and comfortable rubberized over grip which ensures good hold and control. The 15-2/5" curved blade utilizes proprietary Silky 4-RETSUME (Four Rows of Teeth) Technology. Teeth are set in such a way that there appears to be 4 rows of them. Ideal for the toughest pruning jobs! Blade can be adjusted to two different angles for lower or higher cutting and features an upper and lower sickle. The upper sickle is used to cut vines and lower sickle to undercut bark. Lower sickle provides a clean cut without damaging the tree, while upper sickle prevents blade from slipping off limb. HAYAUCHI is the finest telescoping pole saw available on the market today. Black rigid-plastic blade cover is included. Made in Japan.



Model	Extensions	Extension Range	Maximum Working Reach	Weight	Price
177-39	1 (2 Poles)	7' 3" to 12'	17 ft.	4.0 lbs.	\$183.95
178-39	2 (3 Poles)	7' 8" to 16'	21 ft.	5.5 lbs.	\$219.95
179-39	3 (4 Poles)	7' 8" to 21'	25 ft.	6.9 lbs.	\$263.95
177-02-03	Replacement Blade.....				\$77.95

SILKY HAYATE POLE SAW

State-of-the-art, heavy-duty, aluminum telescoping pole saw - The pole saw of choice by professionals. Thick aluminum alloy extension poles are oval shaped, providing precise control over the direction of the blade (especially important for high cutting) thus reducing bending to the minimum. The base pole has a pole-end shock absorber and comfortable rubberized overgrip. The 16-1/2" curved blade utilizes proprietary Silky MIRAI-ME (Smooth Cutting) Technology



- The Teeth of the Future! The precision-ground, razor-sharp, super-aggressive teeth with four cutting angles provide extremely fast cutting action. The taper-ground profile reduces drag and directs more usable energy to the cutting edge. The blade features a replaceable lower sickle for small branches and undercutting bark. HAYATE is manufactured with high visibility colors and comes equipped with a new advanced design sheath with a built-in carrying handle. It is ideal for pruning large branches at a higher position without ever climbing a ladder. This is the strongest and fastest telescoping pole saw available on the market today. Made in Japan.

Model	Extensions	Extension Range	Maximum Working Reach	Weight	Price
371-42	2 (3 Poles)	7' 7" to 16'	16 ft.	6.2 lbs.	\$275.95
372-42	3 (4 Poles)	8' to 20'	25 ft.	7.9 lbs.	\$339.95
373-42	Replacement Blade.....				\$79.95

SILKY SUGOI 360 CURVED SAW

Best-selling, state-of-the-art, professional hand saw with razor-sharp and ultra-fast cutting mono-constructed 14-1/5" curved blade. Curved blade provides greater cutting speed with less effort. Large and comfortable sure-grip handle gives strength and flexibility to the full length of the saw. The super aggressive tooth pattern is ideal for pruning large limbs. Utilizes proprietary Silky MIRAI-ME (Smooth Cutting) Technology - The Teeth of the Future! The precision-ground, razor-sharp teeth with four cutting angles provide extremely fast, clean and smooth cutting action. Features hard chrome-plated, taper-ground curved blade with non-set tooth design. Taper-ground profile reduces drag and directs more usable energy to the cutting edge. The hard chrome-plated blade has 5.5 teeth per inch, resists rust and effects of tree resin, and wipes clean easily. Superbly designed molded-rubber hand grip encases the blade extension to absorb vibration while cutting. Great combination of high performance blade with a comfortable sure-grip handle that really sticks in your hands. Exceptional design, strength, balance and superior finish quality. Comes with the custom high-visibility yellow plastic scabbard that can be attached to the belt or lower leg. Ideal for pruning large limbs on the ground or at height. Made in Japan.



390-36	360 mm.....	\$88.95 each
391-36	Replacement Blade.....	\$59.95 each

SILKY TREE PRUNING SAWS

SILKY IBUKI 390 CURVED SAW

Best-selling, heavy-duty, professional hand saw with a very well-balanced 15-2/5" curved fixed blade. Large, comfortable sure-grip handle gives strength and flexibility to the full length of the saw. Curved blade provides a greater cutting speed with less effort. Utilizes proprietary Silky 4-RETSUME (Four Rows of Teeth) Technology. Teeth are set in such a way that there appears to be 4 rows of them. Ideal for toughest pruning jobs! The heavy duty blade with precision-ground, razor-sharp 5.5 teeth per inch is designed to cut on a pull stroke and provides fast, clean and extremely smooth cutting action. Superbly designed comfortable rubber hand grip absorbs vibration while cutting and provides excellent control over the full length of the saw. The hard chrome-plated blade resists rust and effects of tree resin, and wipes clean easily. Great combination of high performance blade with a comfortable sure-grip handle that really sticks in your hands. Exceptional design, strength, balance and superior finish quality. Comes with a custom black polypropylene sheath equipped with both ring and belt strap attachments that can be used on the left and right side and allow attachment to a tree saddle using carabiner. Suitable for serious pruning tasks and ideal for aggressive cutting and efficient chip removal. Made in Japan.



- 275-39\$94.95 each
- 276-39 Replacement Blade.....\$64.95 each

SILKY ZUBAT CURVED SAW

Best-selling, professional, heavy-duty hand saw with a 13", curved, mono-constructed blade. Features rust-resistant, hard chrome-plated, taper-ground curved blade with an impulse-hardened non-set tooth design. Curved blade provides greater cutting speed with less effort. Utilizes proprietary Silky MIRAI-ME (Smooth Cutting) Technology - The Teeth of the Future! The precision-ground, razor sharp blade with four cutting angles provide fast, clean and extremely smooth cutting action. The hard chrome-plated blade has 6.5 teeth per inch, resists rust and effects of tree resin, and wipes clean easily. Molded-rubber handle holds the high-performance fast-cutting curved blade that fits securely inside its custom-fitted, pivoting, black polypropylene sheath with detachable belt holder. Great combination of high performance curved blade with a comfortable sure-grip handle that really sticks in your hands. Exceptional design, strength, balance and superior finish quality. Suitable for all pruning tasks and cutting large branches. Made in Japan.



- 270-33 330 mm\$69.95 each
- 271-33 Replacement Blade.....\$44.95 each

SILKY POCKET BOY FOLDING SAWS

Compact lightweight folding saw with 6-3/4" blade that will take up very little room in your pocket or backpack. Nicknamed as "Little Giant" due to its extraordinary cutting capacity. This sleek saw features rust-resistant, hard chrome-plated, taper-ground blade with an impulse-hardened non-set tooth design for greater cutting efficiency. Utilizes proprietary Silky MIRAI-ME (Smooth Cutting) Technology - The Teeth of the Future! The precision-ground, razor sharp blade provide fast, clean and smooth cutting. The blade locks securely into one of two open positions, in line with the handle and flush cutting. The blade resists the effects of tree resin and easily wipes clean. The non-slip rubberized handle provides a sure and comfortable grip even in the most difficult operating conditions. Exceptional design, strength, balance and superior finish quality. Clear plastic flip-lock carrying case with belt clip is included. An ideal saw for your glove box or to carry on hikes. Made in Japan. Replacement blades available



Part #	Model	Blade Length	Teeth/Inch	Weight	Price
340-13	PB 130 (Large Teeth)	5"	7	6 oz.	\$32.95
340-17	PB 170 (Large Teeth)	6.75"	7	7.5 oz.	\$35.95
342-17	PB 170 (Fine Teeth)	6.75"	17	7.5 oz.	\$35.95



SILKY TREE PRUNING SAWS

SILKY F-180 FOLDING SAW

Lightweight strong folding saw with 7' blade suitable for multiple tasks. Utilizes proprietary Silky MIRAI-ME (Smooth Cutting) Technology - The Teeth of the Future! The precision-ground, razor sharp blade have four cutting angles along the length of the blade and provide fast, clean and smooth cutting action. Blade easily and securely locks into two different angle positions for easy cutting. Handle is constructed of a fiberglass polypropylene with a rubber insert to insure comfortable and sure grip. Large teeth configuration model comes in Red color and cuts quickly through green wood branches and firewood. Yellow colored fine teeth configuration model can additionally be used on dry wood and carpentry projects. Exceptional design, strength, balance and superior finish quality. Put this handy, lightweight tool in your pocket, glove compartment or tool box. It is an ideal cost-effective all-round folding saw that is always ready for all pruning tasks and outdoor projects. Comes in a blister pack. Made in Japan.



143-18\$29.95 each

144-18 Replacement Blade.....\$19.95 each

SILKY GOMTARO 300 STRAIGHT SAW

Beautifully balanced straight pruning saw with an 11-4/5", ultra-strong, mono-constructed blade. Features rust-resistant, hard chrome-plated, taper-ground blade with an impulse-hardened non-set tooth design for greater cutting efficiency. Utilizes proprietary Silky MIRAI-ME (Smooth Cutting) Technology - The Teeth of the Future! The precision-ground, razor-sharp teeth with four cutting angles provide fast, clean and extremely smooth cutting action. Great combination of high performance blade with an integrated non-slip cushioned comfort rubber handle that really sticks in your hands. Durable black polypropylene sheath with belt clip is included. Exceptional design, strength, balance and superior finish quality. Ideal for all pruning tasks. Made in Japan.



102-30 300 mm\$59.95 each

103-30 Replacement Blade.....\$36.95 each



MAKING THE CUT: 10 TIPS FOR PRUNING

An ideal time to prune most trees and shrubs is just as their buds are swelling. Leafless stems make it easy to see where to cut, dead stems make their presence known, and chances for cold damage near cuts are minimized. Warmer spring weather also promotes rapid healing of cuts. The 10 pointers listed below will keep you and your plants reasonably happy.

1. Prune young trees as little as possible. Any pruning ultimately slows growth.
2. On any tree, cut away watersprouts and root sprouts. These vigorous, vertical shoots - the first originating in the branches and the second at the base of the tree - soak up the plant's energy, look unattractive, and bear few or no flowers or fruits.
3. Avoid hedge shears on bushes, except for those trained to formal shapes. Prune most bushes by a renewal method, every year lopping some of the oldest stems to the ground to make way for young sprouts. In this way, the bush maintains a graceful fountainlike shape.
4. Tailor how much you prune any bush to its growth habit. Forsythia & lilac sucker abundantly, so remove some older stems every year to make way for new ones. Bushes that make few suckers - such as witchhazel & rhododendron - need their oldest stems cut back infrequently.
5. Wait to prune spring flowering bushes, such as spiraea and mock orange, until right after their blossoms fade or else you will be removing some of the flower buds soon to unfold. Prune spring flowering bushes, such as rose-of-Sharon and potentilla, anytime in early spring.
6. Almost all fruit plants need regular pruning. The amount depends on where a plant bears its fruits. Apple trees bear fruits on long-lived stubby growths, so need moderate pruning. Peaches need severe pruning to stimulate an annual supply of new shoots, which are the ones that bear fruit the following year. Each raspberry cane dies at the end of its second year, so completely cut away all old canes.
7. Don't cut unless you have a clear reason to do so. Trees and shrubs vary in their needs for pruning, from, for example, Japanese maple and witch hazel, which need no regular pruning, to butterfly bush and lilac, which need annual pruning to look their best.
8. No matter what the plant, cut all dead and diseased stems back to healthy wood. Also prune back broken stems.
9. Tailor each cut to the response you want from the plant. Where you want increased branching, shorten a stem. Where you want less congestion or to make a plant smaller, remove whole stems or limbs.
10. Always use a tool appropriate to the job. For stems a half inch or less in diameter, use hand-held pruning shears. Cut stems up to an inch-and-a-half across with a long handled lopper. For even thicker wood, use a pruning saw, which differs from a shop saw in having special teeth that do not become clogged by green wood. Make sure that your pruning tools are sharp and clean, because plants heal quickest when cuts are clean.

-by Lee Reich

DEEPROOT URBAN LANDSCAPE PRODUCTS



DEEPROOT® TREE ROOT BARRIERS

DeepRoot Tree Root Barriers are patented mechanical guides that redirect tree roots down and away from hardscapes, (i.e sidewalks, patios, driveways, utilities, tennis courts, etc.) preventing costly root damage while preserving the health and beauty of mature trees. Our Tree Root Barriers are used for linear, surround and root pruning applications on both new plantings and existing trees.

LB 12-2	12" x 24" Prejoined.....	\$4.75 per 2 ft
UB 18-2	18" x 24" Panel - with zipper joining system.....	\$7.75 per panel
UB 24-2	24" x 24" Panel - with zipper joining system.....	\$9.25 per panel
UB 36-2	36" x 36" Panel - no joiners required.....	\$17.25 per panel
UB 48-2	48" x 48" Panel - no joiners required.....	\$22.95 per panel

DEEPROOT® WATER BARRIER/BAMBOO BARRIER GEOMEMBRANES

Versatile DeepRoot geomembranes protect hardscapes and landscapes from subterranean water movement, root intrusion and much more. Used in bamboo and invasive species control, the tough DeepRoot® geomembranes are also ideal for home foundation protection and golf course green construction.



Features:

- Cuts at any measured length with utility knife
- Up to 300 linear feet without the need for a seam
- Joins vertically or horizontally with sealant tape
- Made in the USA

Caution: The DeepRoot Water Barrier will not turn tree roots downward for subsequent lateral growth, which firmly anchors the tree. If the water barrier is to be used near a tree, a local arborist should be consulted.

WB 18/30-100	18" x 100' Roll - 0.030" (0.76mm) thickness.....	\$117.500	WB 30/40-200	30" x 200' Roll - 0.040" (1.02mm) thickness.....	\$490.95
WB 18/30-200	18" x 200' Roll - 0.030" (0.76mm) thickness.....	\$221.25	WB 30/40	30" x 300' Roll - 0.040" (1.02mm) thickness.....	\$690.50
WB 18/30	18" x 300' Roll - 0.030" (0.76mm) thickness.....	\$311.25	WB 30/60-100	30" x 100' Roll - 0.060" (1.52mm) thickness.....	\$391.75
WB 24/30-100	24" x 100' Roll - 0.030" (0.76mm) thickness.....	\$158.00	WB 30/60-200	30" x 200' Roll - 0.060" (1.52mm) thickness.....	\$737.50
WB 24/30-200	24" x 200' Roll - 0.030" (0.76mm) thickness.....	\$297.50	WB 30/60	30" x 300' Roll - 0.060" (1.52mm) thickness.....	\$1,037.25
WB 24/30	24" x 300' Roll - 0.030" (0.76mm) thickness.....	\$418.25	WB 36/30-200	36" x 200' Roll - 0.030" (0.76mm) thickness.....	\$442.75
WB 24/40-100	24" x 100' Roll - 0.040" (1.02mm) thickness.....	\$208.75	WB 36/30	36" x 300' Roll - 0.030" (0.76mm) thickness.....	\$622.50
WB 24/40-200	24" x 200' Roll - 0.040" (1.02mm) thickness.....	\$393.00	WB 36/60-100	36" x 100' Roll - 0.060" (1.52mm) thickness.....	\$470.50
WB 24/40	24" x 300' Roll - 0.040" (1.02mm) thickness.....	\$552.75	WB 36/60-200	36" x 200' Roll - 0.060" (1.52mm) thickness.....	\$885.50
WB 30/30-100	30" x 100' Roll - 0.030" (0.76mm) thickness.....	\$195.95	WB 36/60	36" x 300' Roll - 0.060" (1.52mm) thickness.....	\$1,245.00
WB 30/30-200	30" x 200' Roll - 0.030" (0.76mm) thickness.....	\$368.75	WB 48/30-100	48" x 100' Roll - 0.030" (0.76mm) thickness.....	\$590.50
WB 30/30	30" x 300' Roll - 0.030" (0.76mm) thickness.....	\$518.75	WB 48/30-200	48" x 200' Roll - 0.030" (0.76mm) thickness.....	\$313.75
WB 30/40-100	30" x 100' Roll - 0.040" (1.02mm) thickness.....	\$260.75	WB 48/30	48" x 300' Roll - 0.030" (0.76mm) thickness.....	\$830.25

DEEPROOT® SEALANT TAPE

This 10 foot roll of double-sided adhesive tape is used to join sections of Deep Root Water/Bamboo Barrier.



BB-10.....	\$5.25 each
------------	-------------

DEEPROOT URBAN LANDSCAPE PRODUCTS



URBAN LANDSCAPE PRODUCTS

DEEPROOT® ARBOR TIE



Specifically designed to replace traditional methods such as wire and hose, ArborTie is a revolutionary material that is safe, soft, easy to use and less expensive than traditional tree ties. ArborTie also eliminates the need to flag or cover guywires, and proven ArborKnot expands as the tree grows in caliper, preventing girdling.

Features:

- 900 lbs. tensile strength
- Flat woven polypropylene material
- Lock stitch with rounded weave

AT2G	250' Roll.....	\$41.50 each
AT5G	500' Roll.....	\$83.00 each
AT7G	750' Roll.....	\$124.50 each

We stock ArborTie® Green - Also available in ArborTie® White (2500 lb. tensile strength) by special order. Please call for pricing and availability.

ArborTie® PROFESSIONAL TREE ANCHORING KIT

- Protects from high winds
- Helps trunks grow straight
- Prevents bark damage
- Stakes are reusable
- Made in the USA
- Easy Install: No drive rods required



Kit Includes:

- (3) 15" Steel Eye Stakes
- (3) 10" lengths of green ArborTie® 3/4" strapping material (900 lb. tensile strength)
- Instruction Sheet

AT LD 100.....	\$16.50 each
----------------	--------------

Stakes and Anchors also sold separately:		
SES 15	15" Steel Eye Stakes.....	\$2.50 each
SEA 15	15" Steel Eye Anchors.....	\$6.50 each
SEA 30	30" Steel Eye Anchors.....	\$8.25 each



ArborGard+® TREE TRUNK PROTECTORS

Made of durable polyethylene, ArborGard® shields tree trunks from damaging string trimmers. ArborGard® also protects against bark damage from gardening equipment, tools, rodents and other small pests. Holes are sized to prevent insect infestation and bark rot. ArborGard® is manufactured in round tube form and unlike flat tree guards, will not lose its coil shape in hot sun.

Easy to install, ArborGard+® is 9" high and protects trunks up to 4" in diameter. For larger trees, simply join two or more together.

AG9	1-24	\$1.95 each
	25-49.....	\$1.75 each
	50-99.....	\$1.65 each
	100+.....	\$1.55 each

